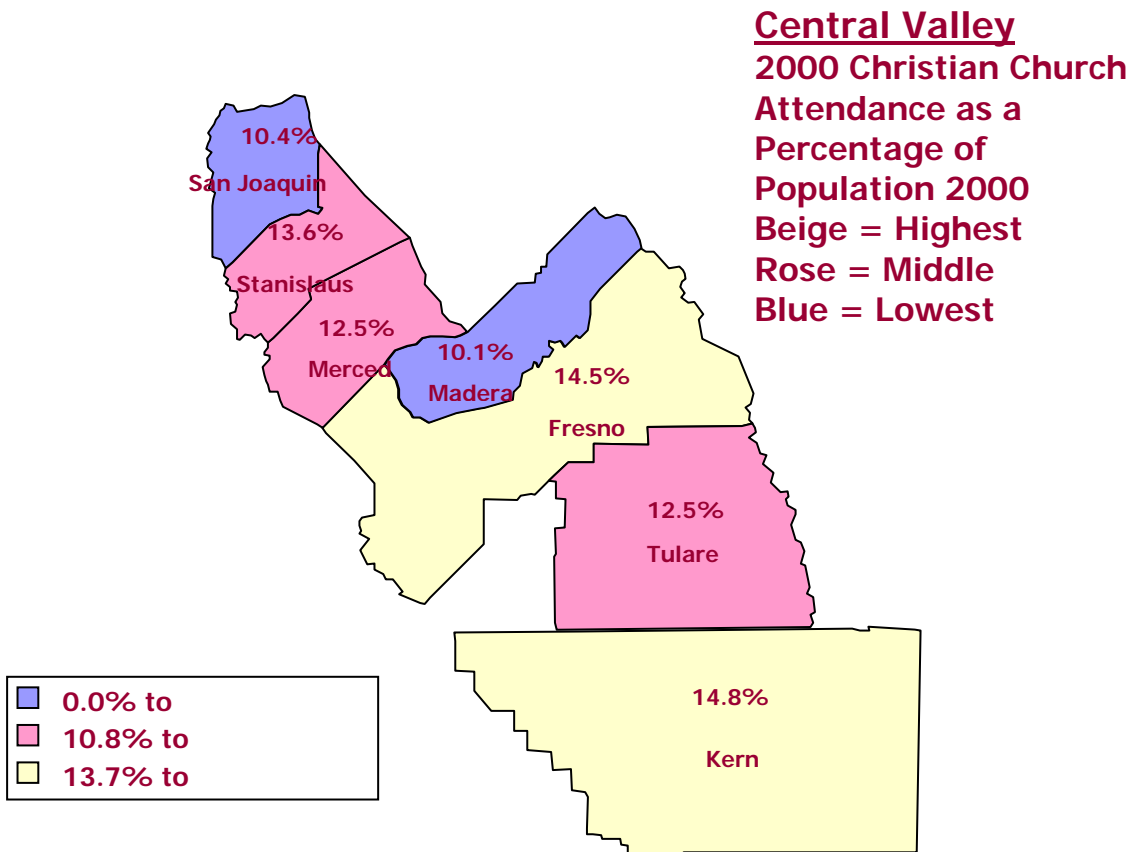
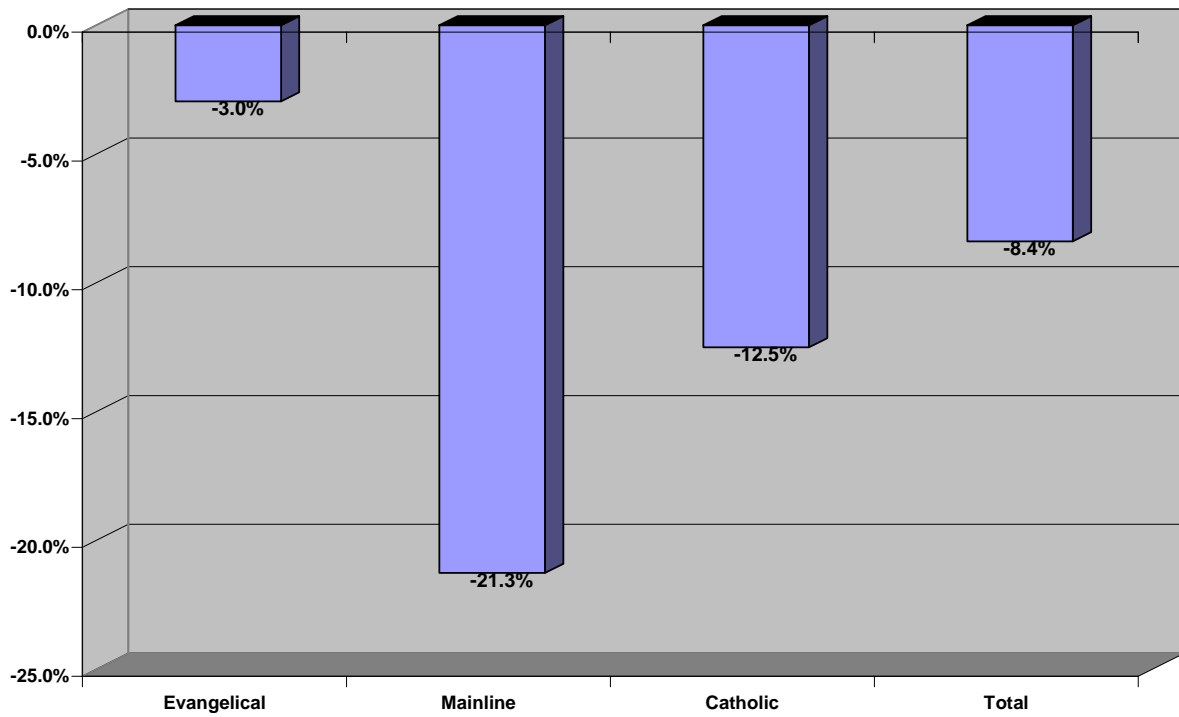


This Study

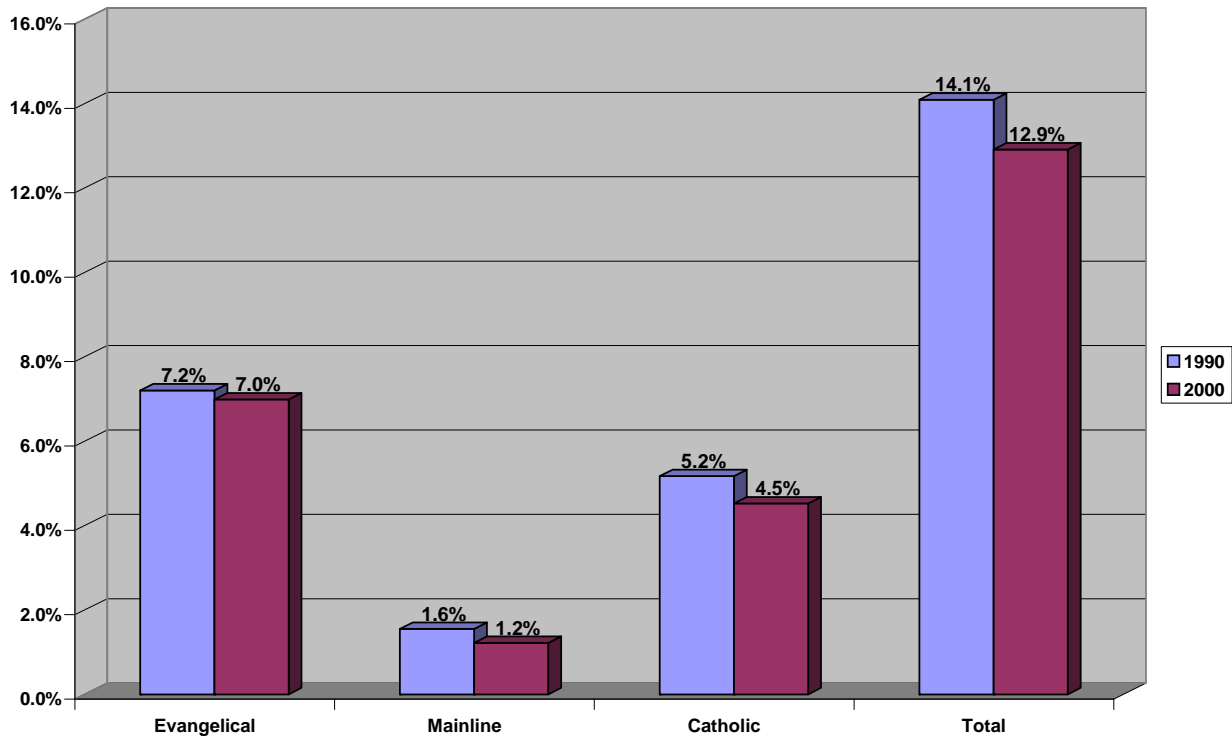
uses weekend church attendance as a more reliable and more immediate snapshot of Christian influence than membership. The following map shows the percentage of the population attending a Christian church on any given weekend in all 50 states in 2000. The Central Valley has an attendance percentage (12.9%) that is much lower than the average for the nation (18.7%). The attendance percentage for Northern California is 12.3% and it is 14.8% for California as a whole.



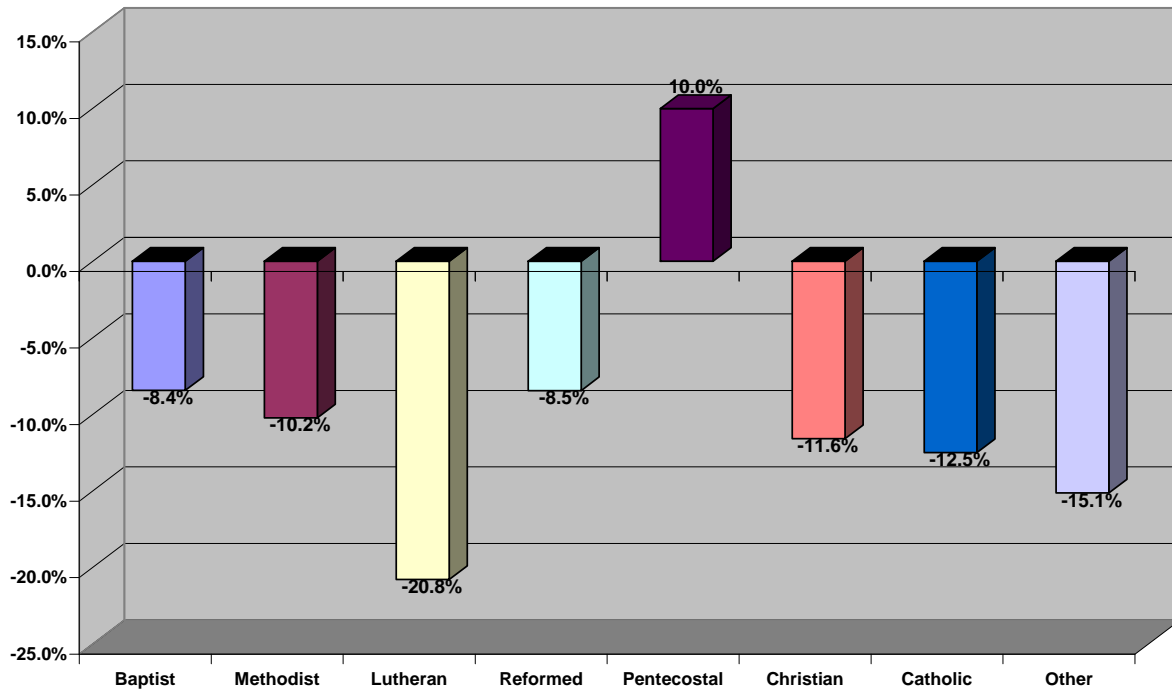
Central Valley MSA Growth or Decline in Worship Percentage 1990 - 2000



Central Valley MSA 1990 & 2000 Percentage of Population at Worship



**1990 - 2000 Increase or Decline in Percentage of the Population
in a Christian Church on any Given Weekend by Denominational Family**



Central Valley MSA Net Growth in Number of Churches 1990 - 2000

